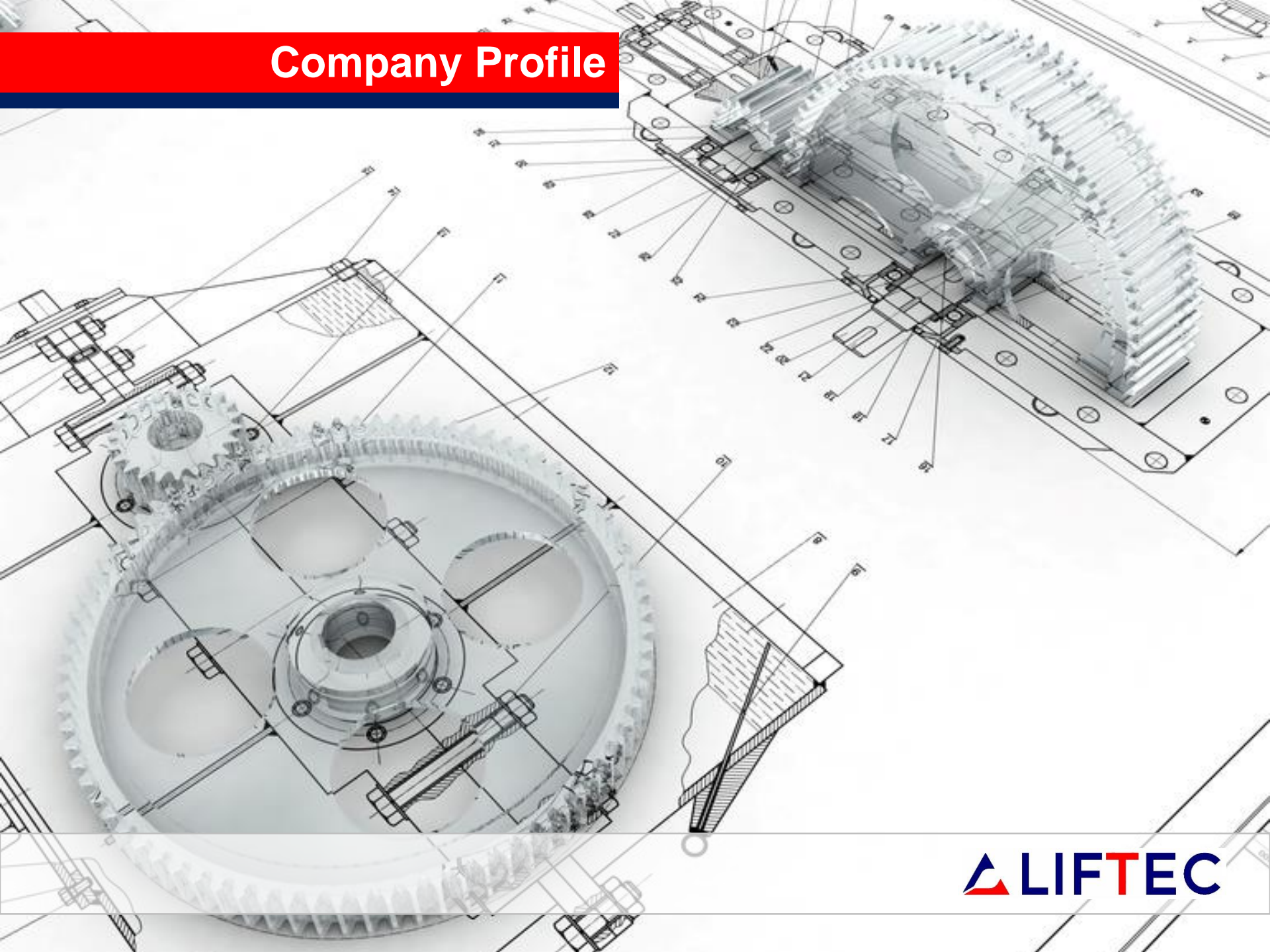


Company Profile



The Company

LIFTEC provides *turnkey design* for

- *Container handling equipment*



- *Fork lift trucks*



- *Truck cranes*



- *Aerial working platforms*



- *Lifting and transportation devices in general*



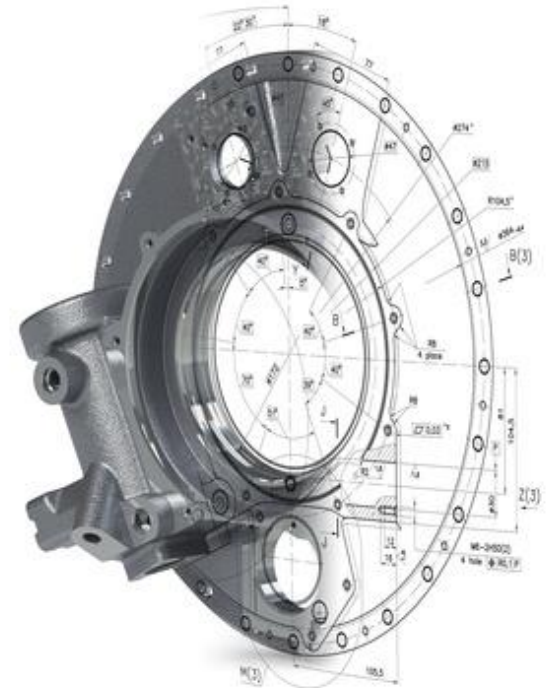
- *Port Equipments*



Mission

Our mission is their success

Move ideas into reality



Vision

Our aim is to propose innovative and eclectic solutions merging experiences from several backgrounds

Think out of the box!



Core Values

Our core values, besides innovation and creativity are

Accountability
Accuracy
Achievement



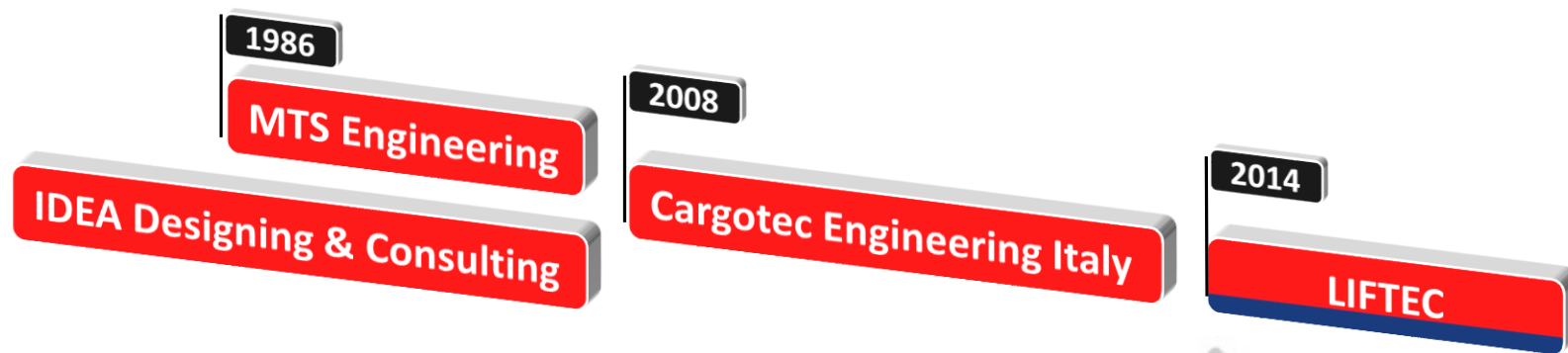
Background

Cargotec Engineering Italy (CEIT), established in 2008, merged experiences from

MTS Engineering, a company engaged since the 80s in the design of transportation and lifting equipment, and

IDEA Designing and Consulting, an engineering service company.

CEIT evolved into ***Liftec*** in 2014



Strengths

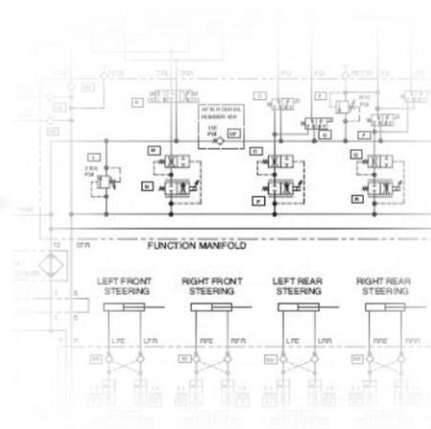
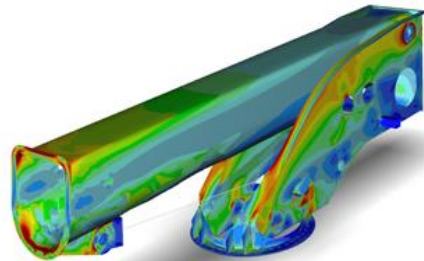
Over 25 years of activity working side by side with companies from all over the world enabled us to achieve a vast experience in different fields and to develop the skill to merge them in order to think "out of the box".

We manage all aspects of the design: from general layout to 3D models and workshop drawings, from main commercial component selection to the definition of the smallest detail, from structural f.e.m. analysis to calculation report, from electric to hydraulic systems.

$$S_e = 0.7[S_3 + S_4]_3 + [S_5 + S_6]_1 = 150,420 \text{ psi}$$
$$\text{Since } K_g \frac{E_o^2}{E_b^2} S_e^2 = 15,423 \text{ psi}$$
$$N_{alt}^2 = \frac{\geq 65,000 \text{ psi}}{\left(K_g \frac{E_o^2}{E_b^2} S_e^2 - 38,125 \right)^2} = 2,012 \text{ cycles}$$

USE THE FOLLOWING:
N_{spe} = 1,000 cycles

$$S_6^2 = \frac{5}{3} \frac{(E_b t_p)^4}{(10 - C_{rg}) Q^2} = 196,199 \text{ psi}$$



Main Customers

ATIB S.r.l. (Italy)



I.C.M. Ltd (India)

Anhui Heli Co. Ltd. (China)



Kalmar Finland Oy (Finland)

Boss Manufacturing Ltd (U.K.)



Kirow A.G. (Germany)

Clark Omega (Australia)



Liftking Industries (Canada)

CVS S.p.a (Italy)



Linde HTD Ltd (U.K)

Ignazio Messina &C. (Italy)



ST Kinetics (Singapore)

Loadstar (India)



SL Industries (Bulgaria)



Main Customers

Nuova Detas (Italy)



LBS Link Belt S.p.a. (Italy)

OM pimespo S.p.a. (Italy)



So.Ca.Ge. Fassi (Italy)

Bizzocchi Oleodinamica (Italy)



Hiab (Sweden)

Effer S.p.a (Italy)



Drillmec S.p.a (Italy)

Tesmec S.p.a. (Italy)



Haberkorn (Austria)

MacGregor Oy (Finland)



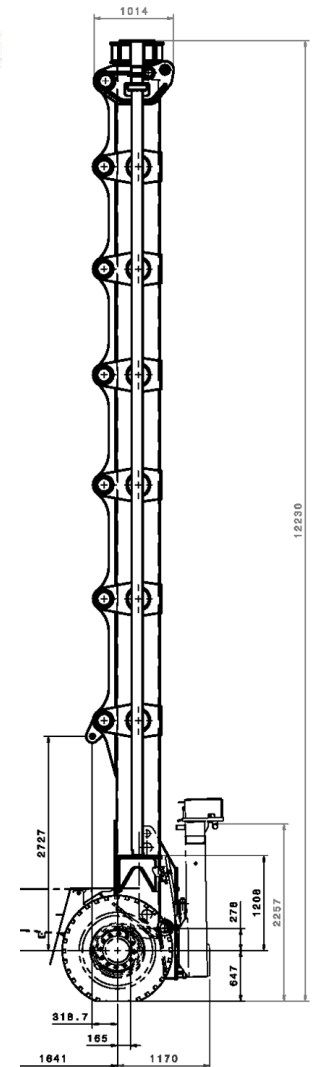
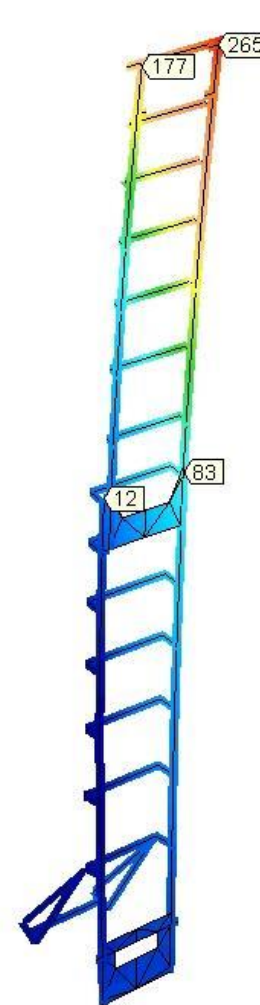
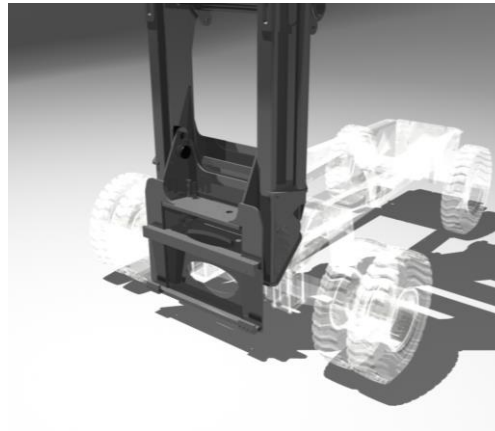
Terex Italia S.p.a. (Italy)

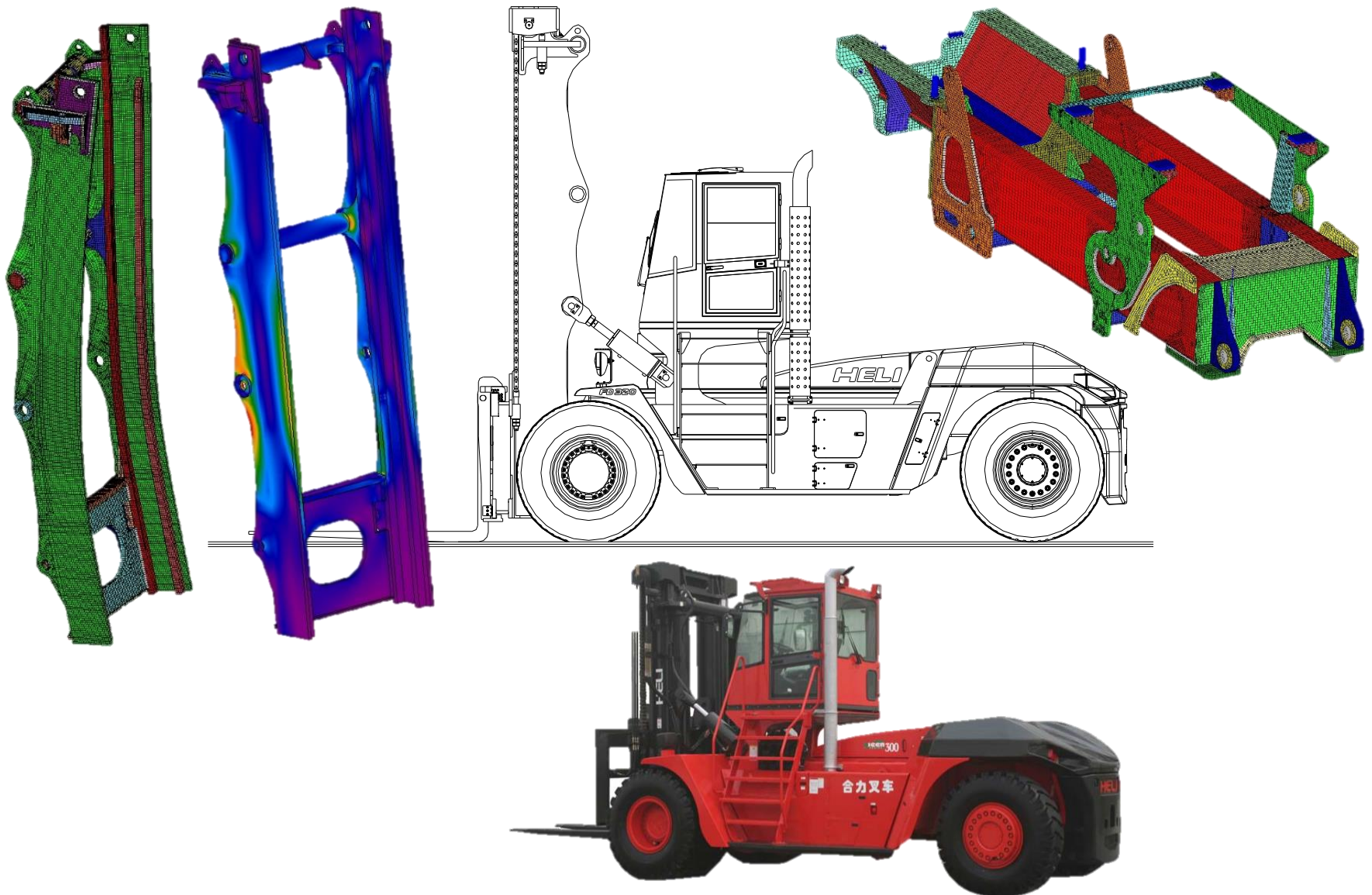


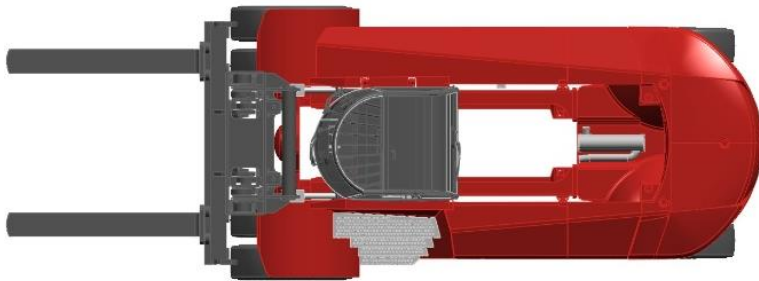


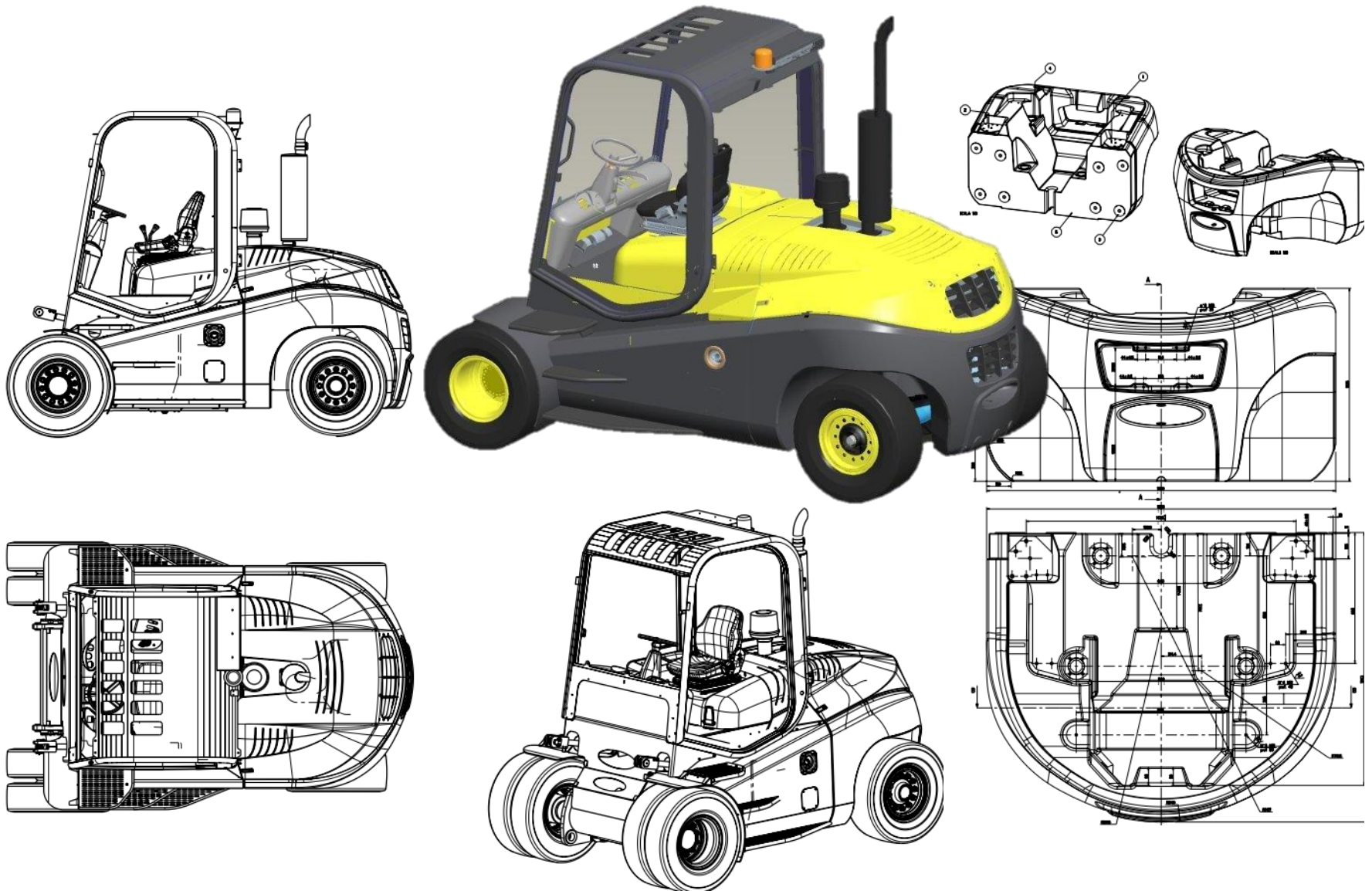


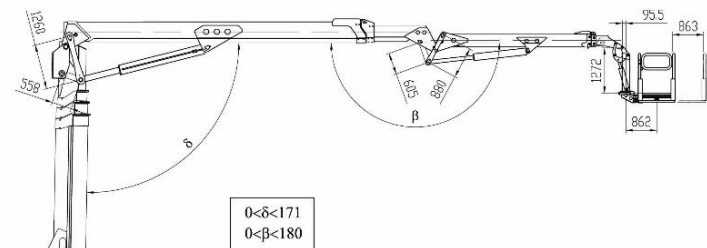
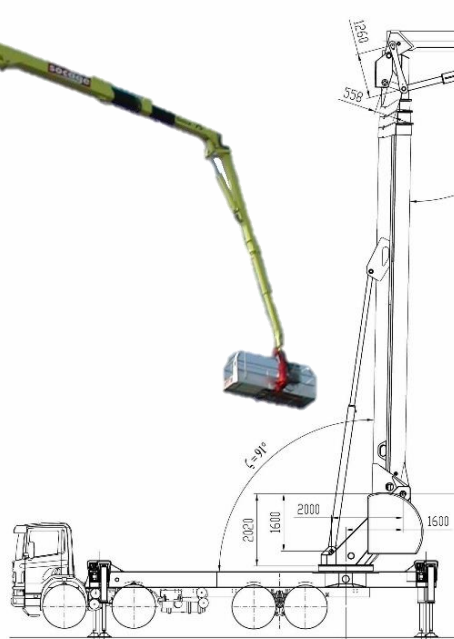
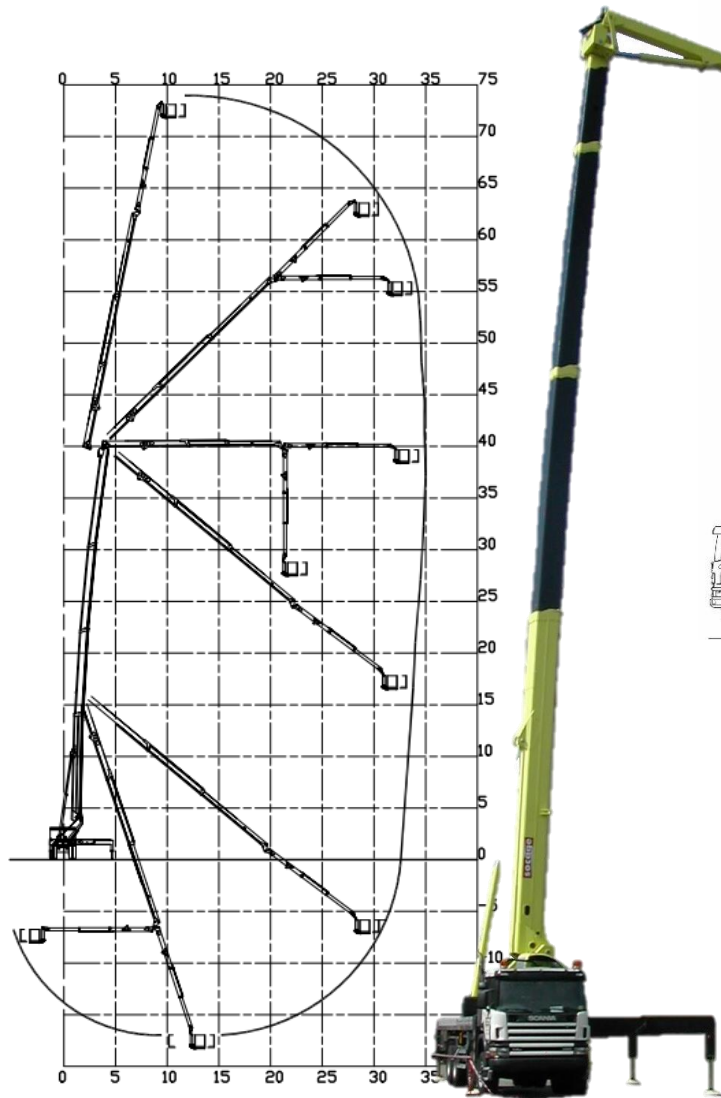




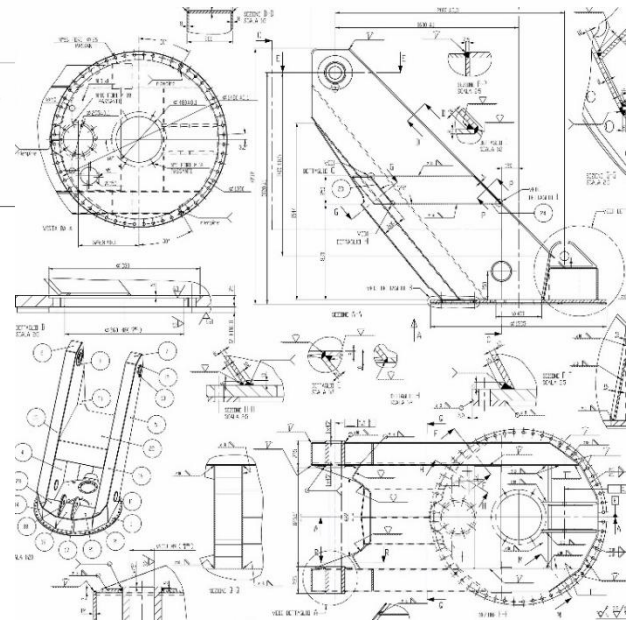
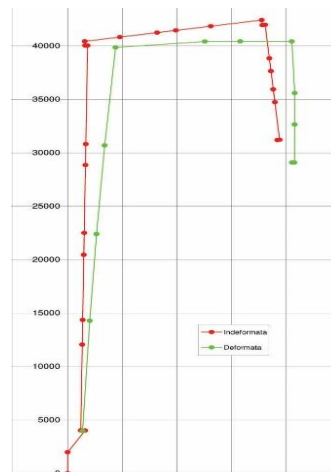






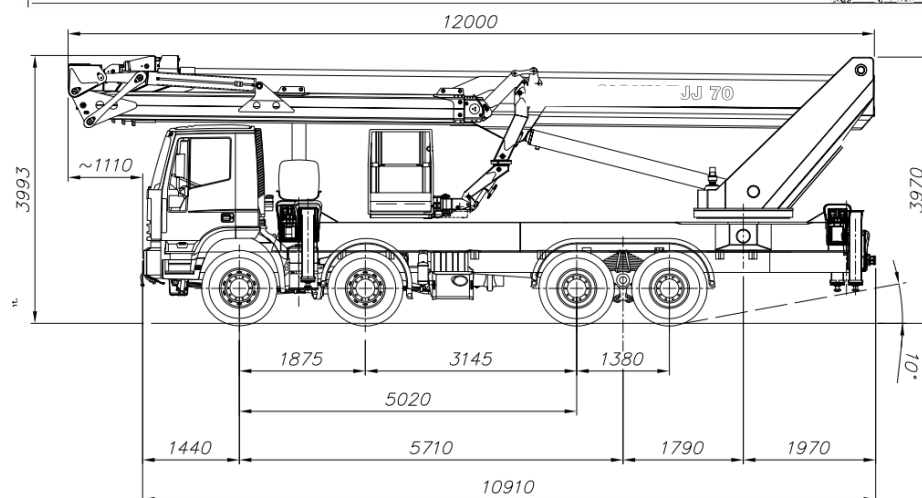
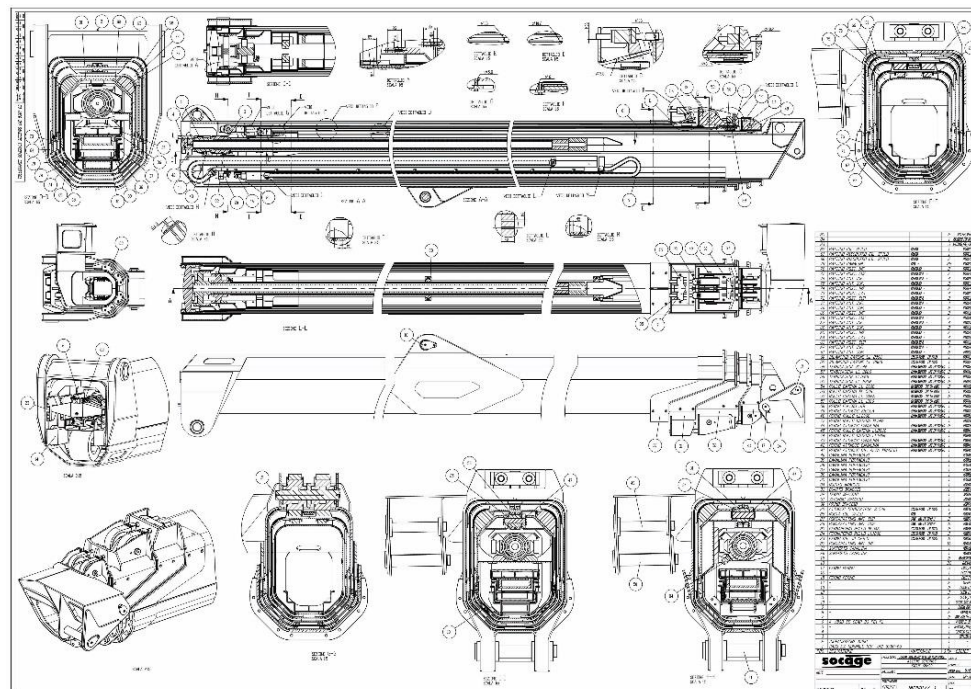


$0 < \delta < 171$
 $0 < \beta < 180$



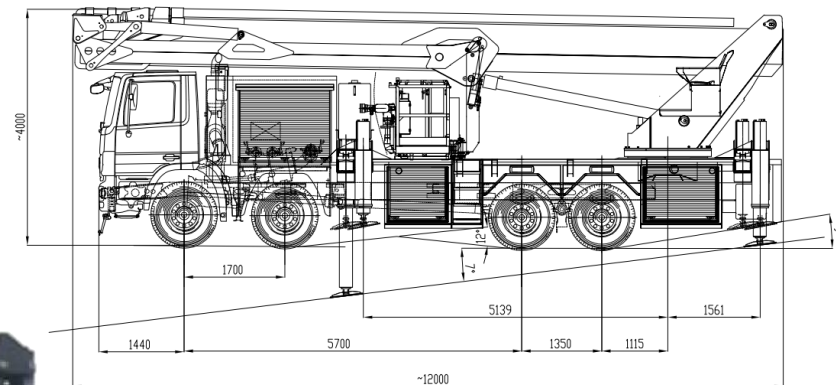
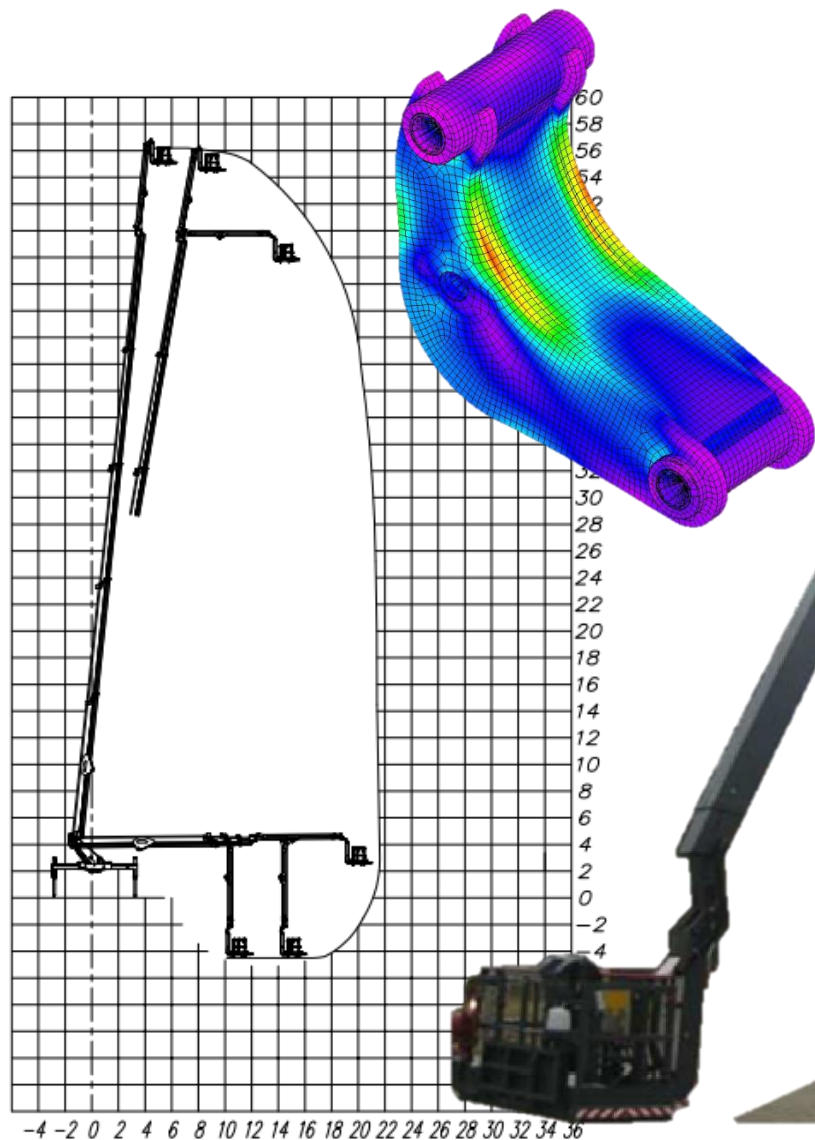
Projects - aerial working platforms

SoCaGE *Sioux* TJ-65



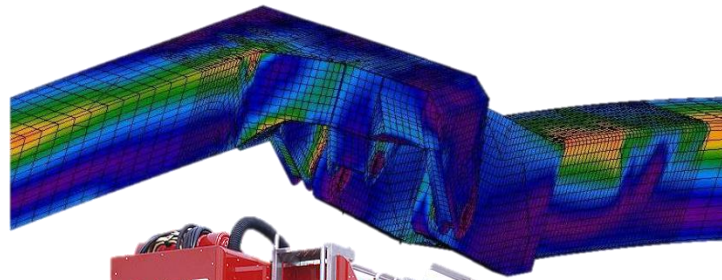
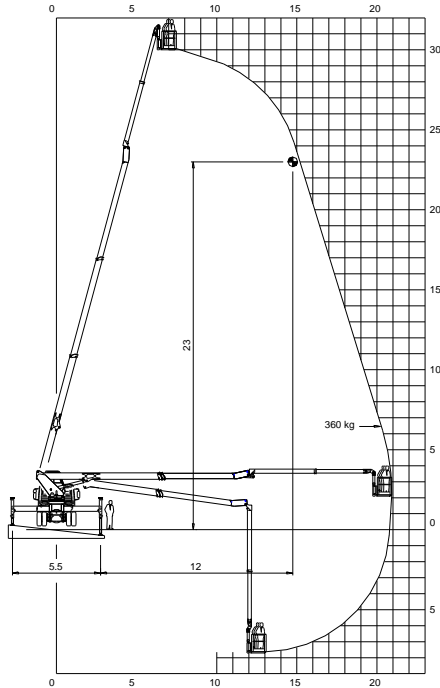
Projects - firefighting platforms

SoCaGE *Sioux* TJ-56-FF



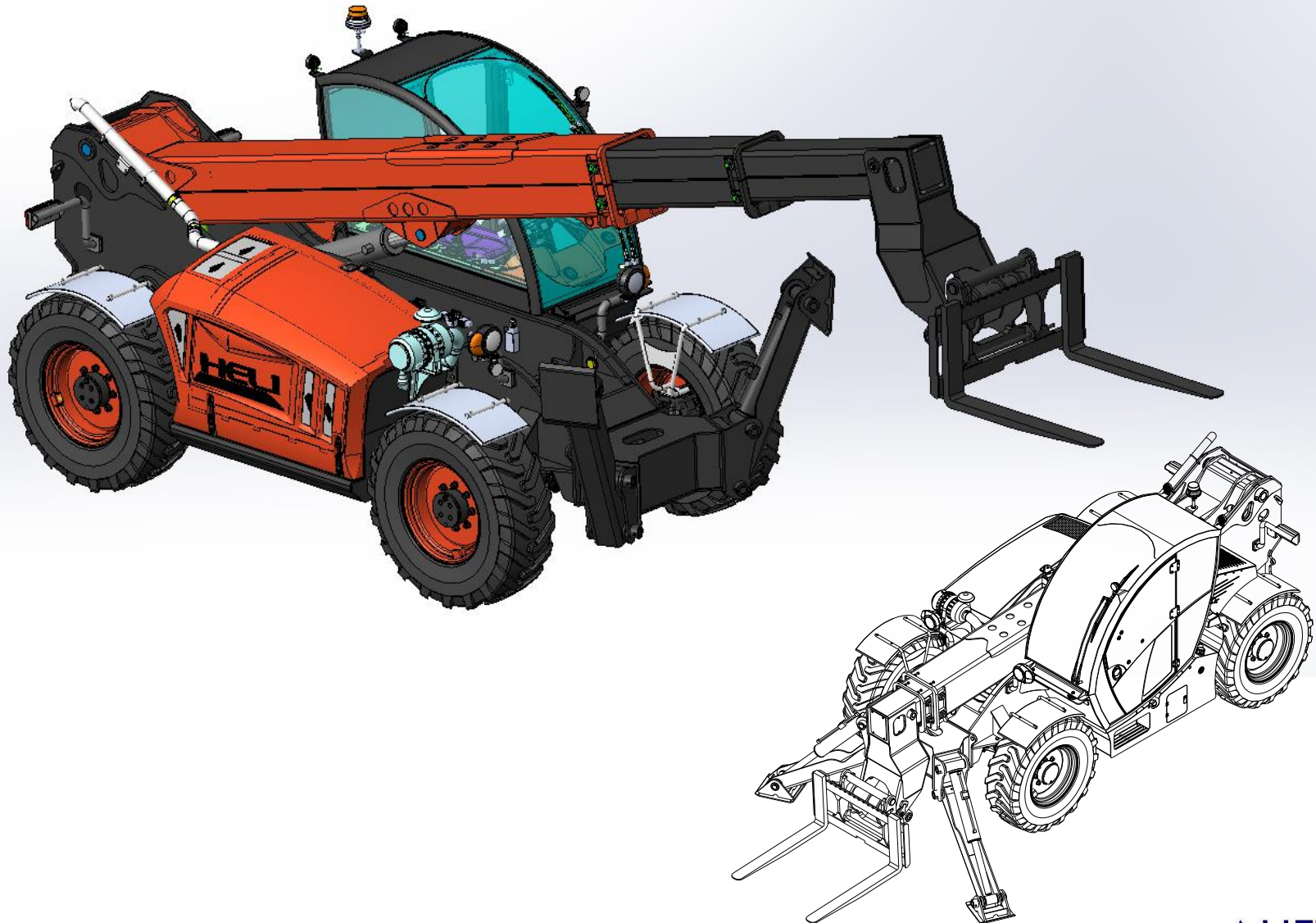
Projects - firefighting platforms

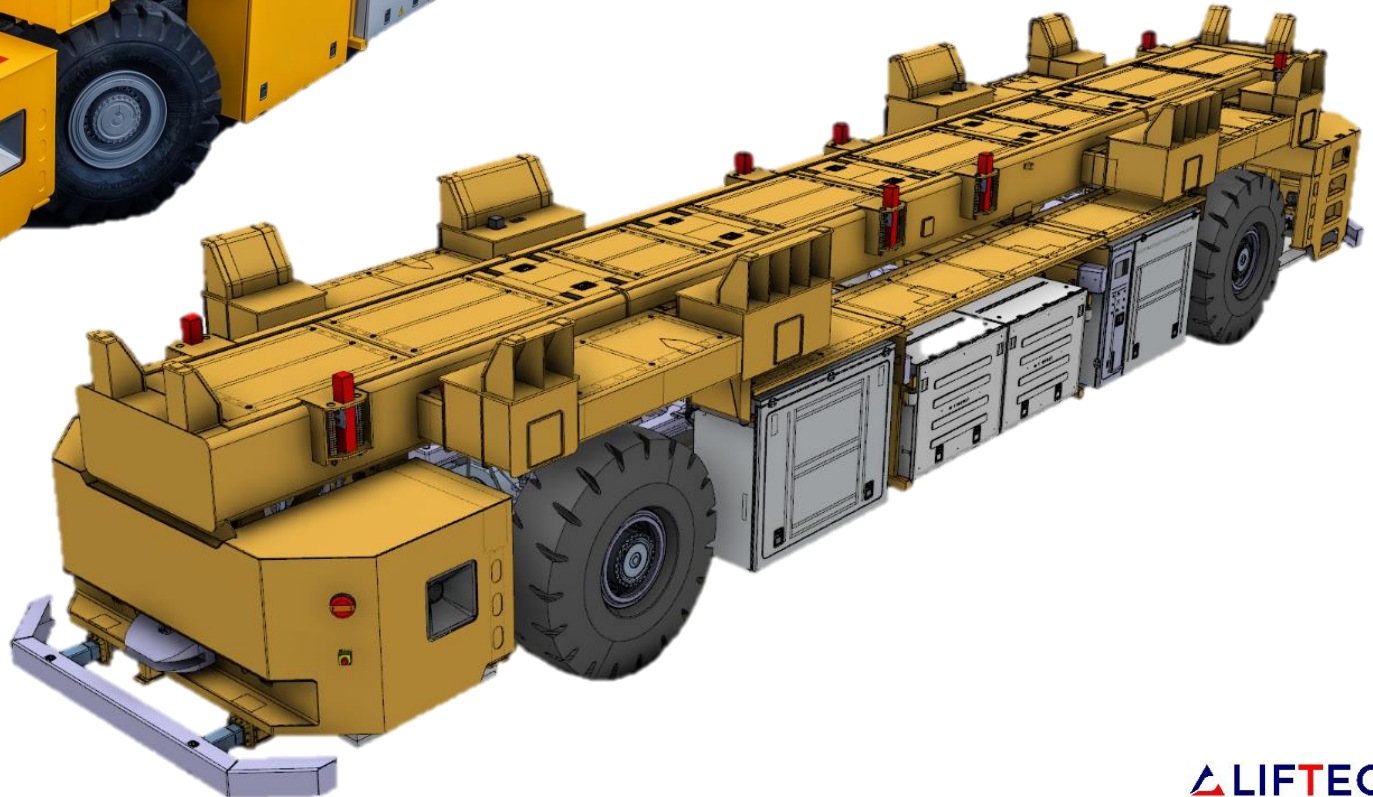
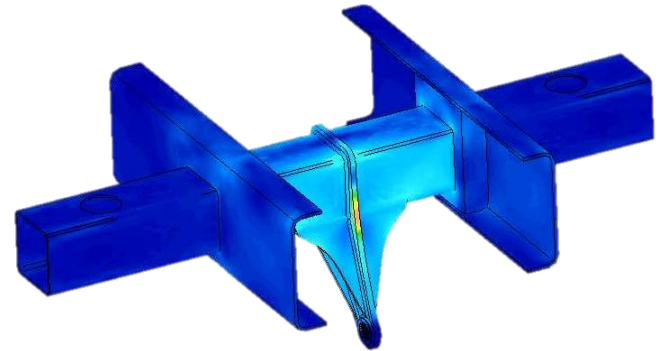
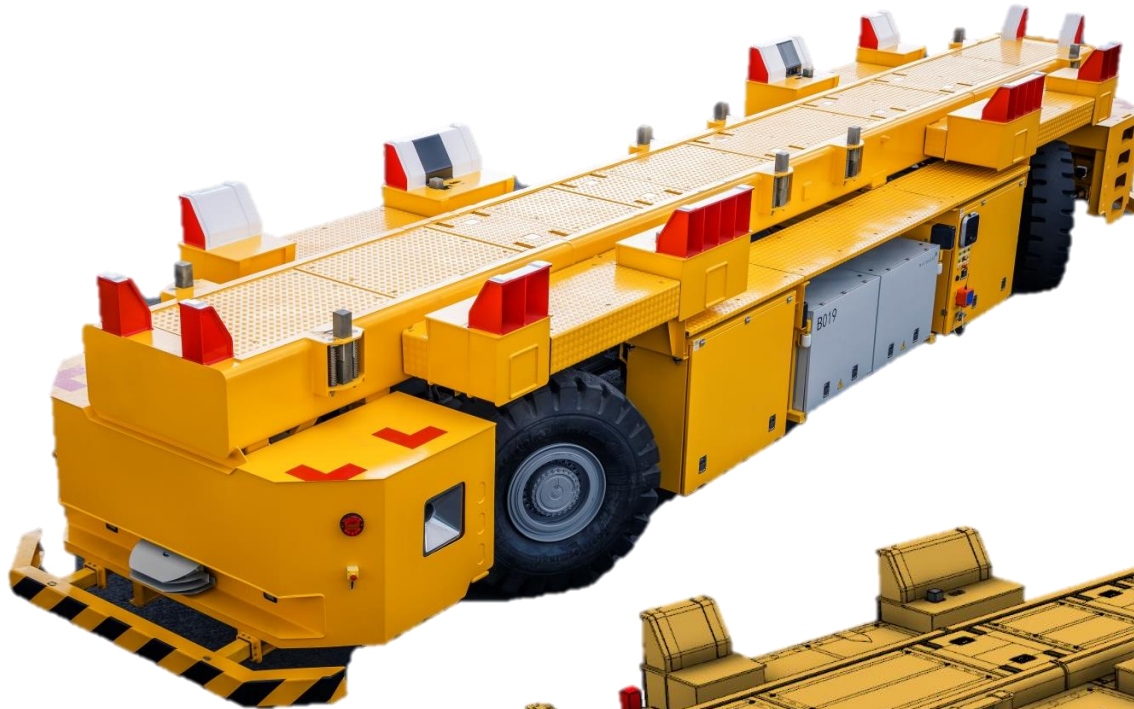
Haberkorn – Marte MX-32

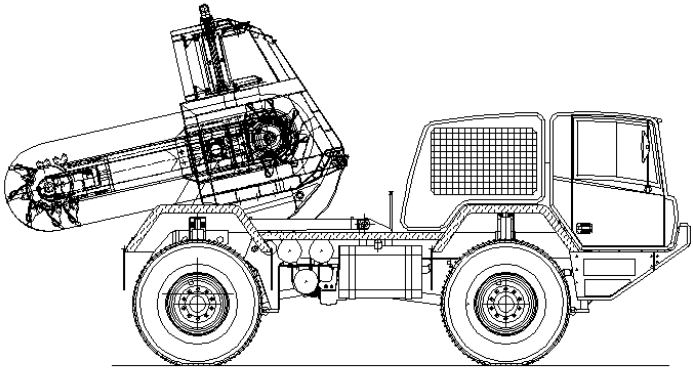
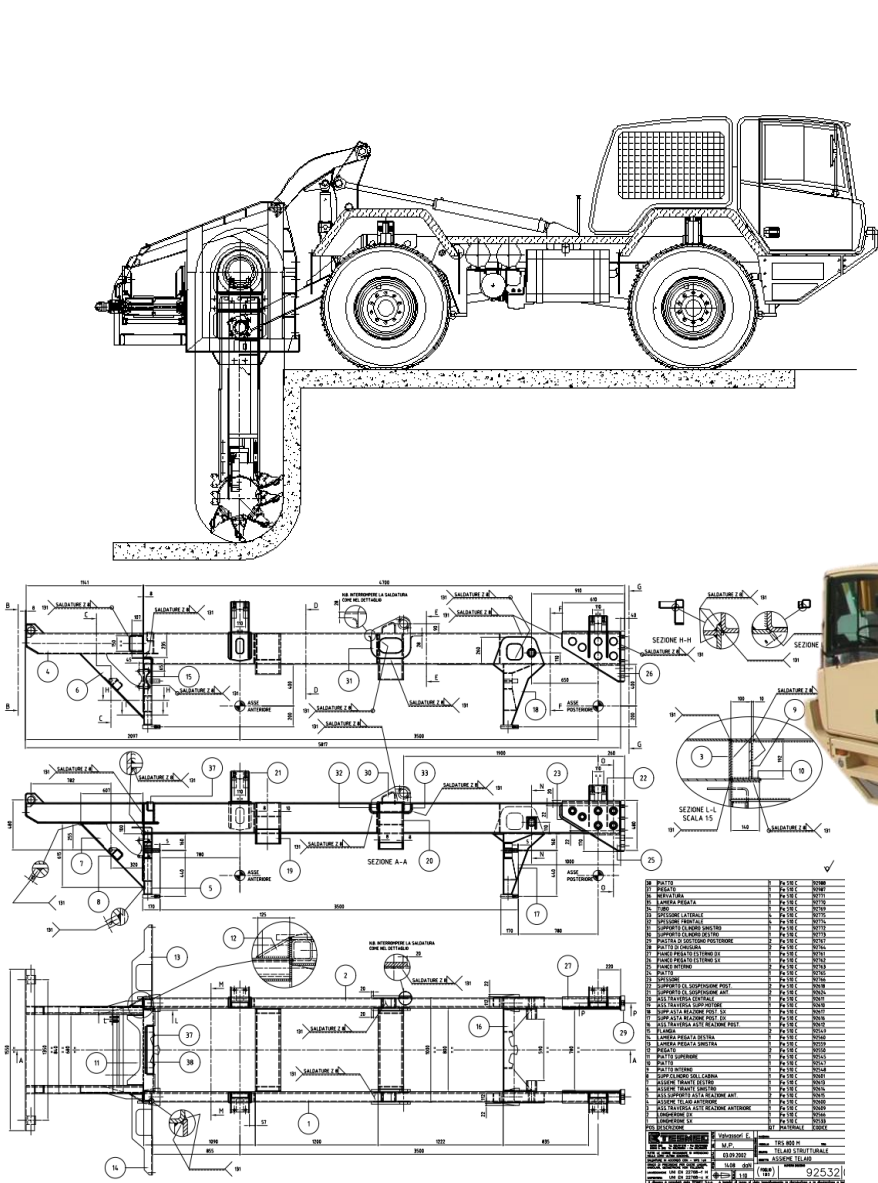


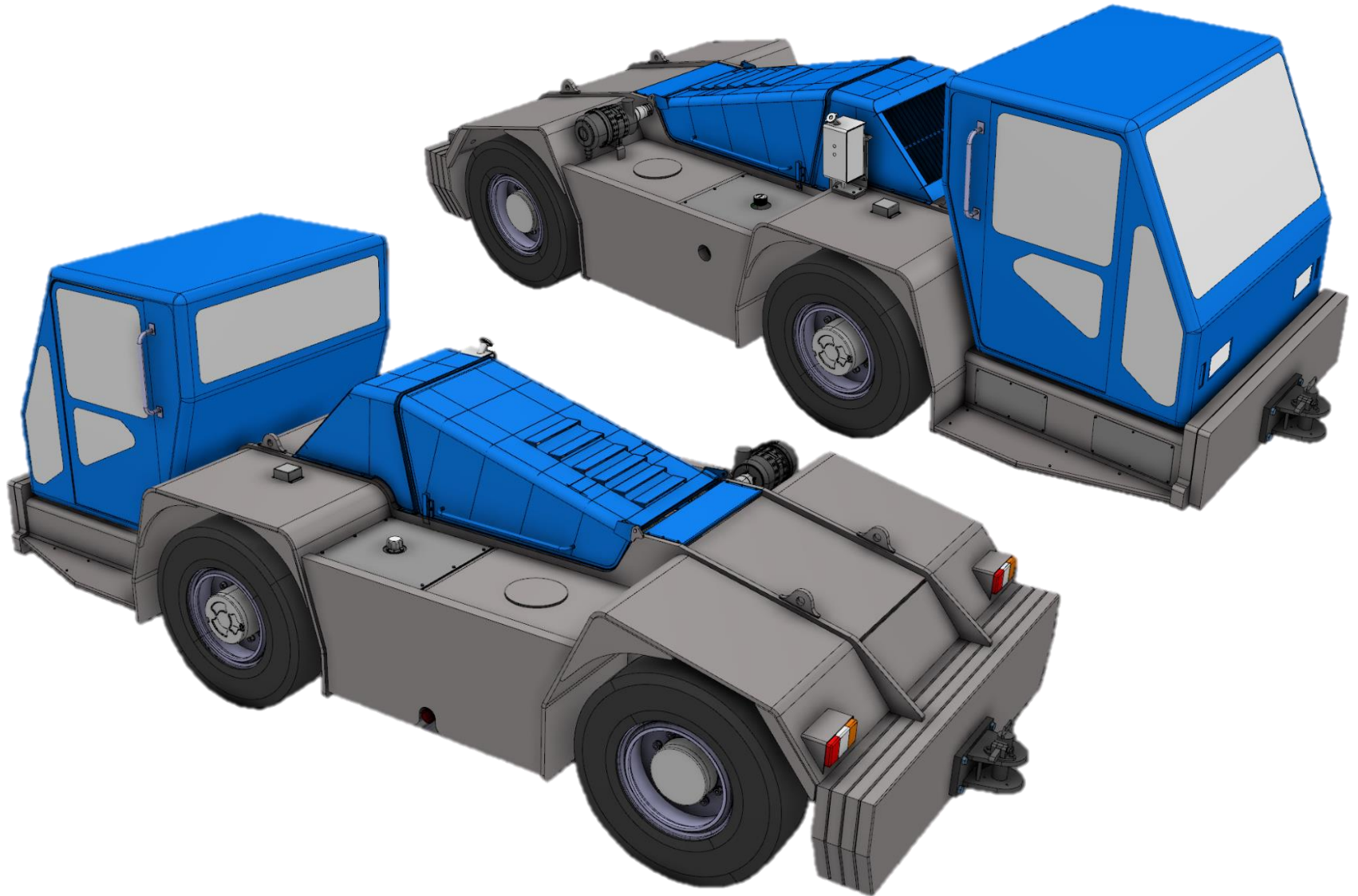


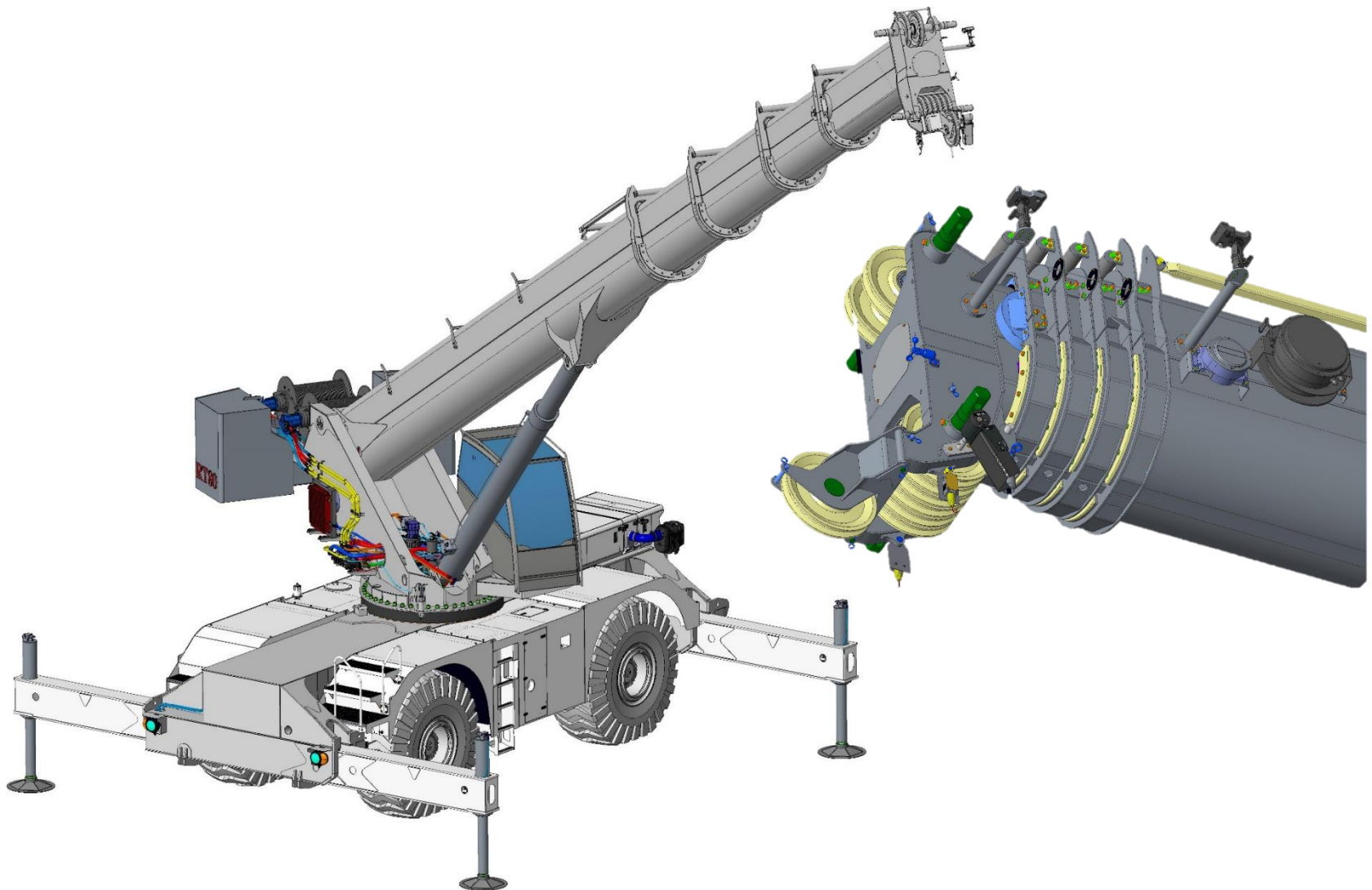














Via Massa Avenza, 2 54100 Massa (MS) - Italy

Tel +39 0585 256015

info@liftec.it